

Bracknell Forest Children and Young People's Trust

# Children and Young People's Plan 2006 - 2009 **2009 Review**



## CONTENTS

	Page
Introduction	1
Bracknell Forest Children and Young People's Trust	2
From vision to practice	4
Annual Performance Assessment (2008)	8
What has changed in Bracknell Forest?	9
Needs analysis	10
Progress against priorities and areas for further development	11
New priorities	25
Next steps	30
Annex 1      Structure of the Trust	31
Annex 2      Progress made by Working Groups	32
Annex 3      Needs Analysis: Executive Summary	47
Annex 4      Linked plans and strategies	50
Annex 5      Additional information- web links	51

## 1. INTRODUCTION

The Children and Young People's Plan [CYPP] is an important part of ensuring that *Every Child Matters* is implemented in Bracknell Forest, and is a key mechanism for improved integration and partnership in children's services. Section 17 of the Children Act 2004 provides the statutory basis for the CYPP along with CYPP Regulations, published in 2005 and 2007.

The Plan is central to the work of Children and Young People's [CYP] Trust as it is the defining statement of strategic planning and priorities for children, young people and families in the area.

The first Bracknell Forest Children and Young People's Plan [CYPP] was published in June 2006 as a three year plan, ending in 2009. The Plan was based on a needs analysis which included wide ranging consultation with children and young people, parents and carers, practitioners and partners in the voluntary and community sector.

Much has been achieved in relation to improving outcomes for children, young people and their families in Bracknell Forest since the publication of the first plan. This has been evidenced through Annual Performance Assessment Inspection led by Ofsted, School Inspections, Joint Area Review Inspection in 2007, PCT Inspection, and in what children, young people and their families tell us.

In spite of this, we are not complacent, and acknowledge that there are improvements that can and should still be made.

Legislative proposals are currently being developed nationally to establish statutory Children's Trust Boards and to ensure the CYPP is developed and owned by all Children's Trust partners. It is anticipated this new legislation will be in place by November 2009.

All areas will need to develop a new CYPP for publication by April 2011. The format of the new CYPP will be significantly different to the current format, with a strong emphasis on identifying the use of resources, performance management and the use of joint/pooled budgets.

Current CYPP regulations do not define the duration of the plan. Local authorities can review and roll forward an existing plan, particularly in circumstances where any new plan would have a limited life span before being substantially re-written to meet new requirements.

The Bracknell Forest CYP Trust has agreed to roll forward the current plan, with a view to publishing a new plan on 1 April 2011. We believe that the way in which we have reviewed the plan each year and taken into account our progress against outcomes, that the priorities we have identified remain so, and in line with good practice they will continue to be reviewed and revised according to identified local need, and feedback.

This review has been undertaken by the Bracknell Forest Children and Young People's Trust which represents the organisations that work together in Bracknell Forest to improve the lives of children, young people and their families

## 2. BRACKNELL FOREST CHILDREN AND YOUNG PEOPLE'S TRUST [CYP Trust]

Arrangements for Children's Trusts are set out in Section 10 of the Children Act 2004 which describes the duty to co-operate for all those organisations in the statutory sector.

The purpose of the Children and Young People's Trust is to hold a collective understanding of the needs, development and wellbeing of children and young people, and to work together to promote high quality local arrangements, providing shared resources so that children can thrive, aspire and achieve, thereby contributing to the improved outcomes for children and young people in Bracknell Forest.

### Our Vision

***“Our vision is to secure the appropriate level of support for all children, young people and families, to enable them to lead happy, healthy and fulfilled lives so that they can play an active role within the community, and realise their potential through the well coordinated provision of services”.***

The role of the CYP Trust is to turn the vision into a reality:

#### **We will support children, young people and families to:**

- **Maintain healthy lifestyles that promote good physical, emotional and spiritual wellbeing. *[Be Healthy]***
- **Live in a safe, secure and tolerant community where they are protected from harm, abuse, harassment and neglect. *[Stay Safe]***
- **Achieve their full potential, with appropriate opportunities for learning and participation in a range of sporting and cultural activities within the Borough. *[Enjoy and Achieve]***
- **Contribute to their local community, are enabled to have their voices heard and are valued as responsible citizens. *[Make a Positive Contribution]***
- **Are able to grow up in a loving, stable environment. *[Achieve Economic Wellbeing]***

*Children and Young People's Plan 2006 – 2009 [Updated June 2009]*

The Bracknell Forest CYP Trust was established on 1 April 2008. It is one of the themed partnerships that contribute to the work of the Bracknell Forest Partnership [Local Strategic Partnership] responsible for the development and delivery of the Sustainable Community Strategy and the Local Area Agreement.

The Bracknell Forest Partnership is supported through the work of the CYP Trust in delivering its vision which is an overarching vision for the community.

The CYP Trust works within a framework to deliver improved outcomes to children, young people and families. This includes:

- ❖ **Integrated Front Line Delivery** – providing the mechanisms to enable front line practitioners to work together in a more integrated way, cutting across institutional boundaries and working more effectively as a “team around the child”. Examples of this include the development of Children’s Centres within local communities, and the development of Portman Close supporting the delivery of Integrated Youth Support.
- ❖ **Integrated Processes** – providing the approaches necessary to support the diverse needs of children, young people and families. Examples include the Common Assessment Framework, Information Sharing, Contact Point and other systems to support integrated working.
- ❖ **Integrated Strategy** – securing effective planning and commissioning arrangements to drive improvements and culture change across all services and organisations. Examples include undertaking children and young people’s needs assessment, preparing the CYPP, and developing effective commissioning including developing pooled/joint budgets.
- ❖ **Inter-agency Governance** – providing clear leadership, accountability and providing a strong strategic direction. The Bracknell Forest Partnership, the CYP Trust and its Executive provide this function and will continue to develop this role, which will be strengthened by the forthcoming legislation.
- ❖ **Safeguarding** – ensuring children and young people are safeguarded is a theme that runs throughout all of the work with children, young people and families. CYP Trusts play a central role in bringing together all the services needed to ensure that this happens.
- ❖ **Prevention and Early Intervention** – supporting children, young people and families from an early stage to have the opportunity to fulfil their potential. Local partners work together to identify programmes and services that will achieve this goal.



### 3. FROM VISION TO PRACTICE

In order to deliver the framework set out above a number of working groups have been created with the responsibility for developing and delivering appropriate plans, strategies and in some cases direct services to support the priorities of the Trust. All of the groups have multi-agency membership which includes partners from statutory and third sector agencies and where appropriate children, young people and parent/carers. [Annex 1 shows the structure of the Trust and its groups].

A brief summary of each of these groups is shown below and more detailed information about the progress made in these groups in the last year is shown as annex 2.

#### **Prevention and Early Intervention Group [PEI]**

Prevention and early intervention remain key strands of the national Children's Plan: *Building Brighter Futures* [DCSF 2008], and *Healthy Lives, Brighter Futures* the joint strategy for children and young people's health [DCSF and DH 2009] and many of our local plans and strategies including the CYPP.

The PEI Group has taken the lead in working closely with partners in the third sector, and developing preventative services that support the delivery of a number of the priorities in the CYPP.

Prevention and early intervention must remain high on the agenda this year partners will work to continue to embed this into all areas of work across the CYP Trust. There is a particular emphasis on continuing to engage, support and build relationships with partners in the third sector to deliver services that support children and young people. The work of this group will be mainstreamed into other working groups and the CYP Trust will monitor through the CYP Trust Executive.

#### **Child Adolescent Mental Health Services [CAMHS] Partnership**

The CAMHS Partnership has overseen the implementation of the strategy *We all Have a Part to Play*. It continues to monitor the delivery of Comprehensive CAMHS in Bracknell Forest, the Integrated Care Pathways for Primary and Secondary aged children, and has contributed to the development of a service specification for Tier 3 CAMHS across Berkshire East, working closely with partner authorities.

The National CAMHS report has been responded to and proposals from this are being incorporated into the local strategy. This is still in draft form but it is planned to have a new updated CAMHS strategy in place for 2009/10.

#### **Parenting Strategy Group**

The Parenting Strategy Group has reviewed the delivery of *Strong Foundations*, the multi-agency strategy to support parent/carers in the borough, and has updated the action plan as a result. Parent engagement, effective parenting programmes and new appointments have all supported the successful delivery of parenting support in the borough.

Parenting support will continue to be a core strand of national policy, with a significant emphasis now being placed not just on parenting, but on a "Think Family" approach and work will continue to develop and deliver these initiatives.

Some key tasks in the coming year will include identifying referral routes/pathways to accessing parenting support and advice, further development of the provision of good information to parent/carers and families, monitoring and evaluating current programmes, developing and implementing "Think Family" approach, and seeking greater engagement and involvement of parent/carers in service planning and delivery.

### **Shared Processes Group**

The Shared Processes Group has continued to steer the ongoing development and implementation of the strands of work that support integrated working on the front line.

These include the Common Assessment Framework, now fully embedded in the borough, developing an Information Sharing Protocol and associated materials, preparation for the implementation of Contact Point, and the Section 12 Childcare Act Duty to provide a comprehensive Family Information Service.

Work will continue on all the strands that support integrated working which includes developing a coordinated training programme, developing the role of "lead professional" and working on further development of new and developing ICT initiatives to support integrated working.

### **Community Activities and Services Group**

This newly formed group has developed out of the original Extended Services and Children's Centre Group; it has a wider focus encompassing Extended Services, Children's Centres and Integrated Youth Support.

Representatives from all three areas meet on a monthly basis to ensure progress remains on target, and then a wider network meeting of multi-agency partners meets three times per year to ensure all partners with an interest in Community Activities and Services are engaged in ongoing discussion, planning, consultation and networking.

### **Aiming High for Disabled Children Working Group**

This group has lead responsibility for developing and implementing the *Aiming High for Disabled Children* initiative, and was formed in June 2008. The group has strengthened and developed positive local partnership working.

The Aiming High for Disabled Children [AHDC] Strategy was developed for Bracknell Forest incorporating the views of parent/carers, over 70 disabled children and young people, and practitioners; this strategy was approved by the DCSF and work is now underway to progress the actions.

### **Care Matters Steering Group**

The key aim of this group is to act as the strategic planning group to ensure the implementation of "*Care Matters Time to Deliver for Children in Care*" published by the

DCSF in 2008, it sets out a framework to ensure that the opportunities for children in care are maximised and outcomes are improved.

The group has identified strengths and gaps in the service for Looked After Children and vulnerable children on the edge of care and is working to meet these in a variety of ways. A range of services to support young people who may be at risk of coming in to care, are now co-located at Portman Close.

A recent audit undertaken by the group identified further areas for development to ensure Care Matters is implemented to support all our looked after children and young people.

### **Workforce Strategy Group**

The Workforce Strategy Group has continued to support the delivery of the key priority areas these are the recruitment of staff, retention of staff, promoting integrated working, strengthening leadership and management and safeguarding. The group has revised its membership to include a wider range of the workforce, and has established a system of highlight reporting to ensure information is shared on progress being made across the range of agencies/services.

The publication of the Children's 2020 Workforce Strategy [Children's Workforce Development Council] has clarified a definition of the core workforce and the wider workforce, and provided a clearer framework on which to base future work. Therefore the workforce strategy is currently being revised to ensure it supports the development of a workforce that is fit for purpose.

### **Engaging Children and Young People**

There are many positive examples of the engagement of children and young people across service planning and delivery.

Engagement has taken the form of direct consultations, questionnaires and evaluations, young people being involved in interview processes, and some through young people's attendance at meetings and participation in staff interviews. A number of events have been organised for young people to participate in including a "Hear by Right Conference".

This is not an area of work that will ever be concluded. There is a recognition that we must at all times consider and actively seek the views of children, young people and their families and demonstrate this within our plans, strategies and ongoing direct work on a day to day basis.

### **14 –19 Partnership**

The 14 – 19 Partnership has specific aims which include; developing a strategy for planning and funding local provision, identifying the needs of learners and developing a varied curriculum, and ensuring submissions are made for inclusion in regional and national initiatives.



Major changes are taking place in the way that education is being provided for young people aged 14 – 19 and work will continue through the partnership to ensure that they have the best opportunities available to succeed in education and ongoing career development. Some of the forthcoming tasks include; reviewing the provision for young people not in employment or education [NEET], developing Diploma implementation plans, and reviewing the 14 – 19 plans in light of the 16 – 19 funding transfer due to take place in 2010.

### **Pathways to Success Group**

The Pathways to Success Group has a role in promoting the economic well-being of young people and coordinates activity to increase levels of engagement by particularly vulnerable young people in education and training, and preparing for employment and leaving school.

The group has a focus on many of the wider issues that impact on the economic wellbeing of young people. Work will continue through this group to address the wider needs of young people, including the monitoring of teenage pregnancy and housing issues. The group will focus on developing models for Integrated Youth Support across Bracknell Forest.

### **Local Safeguarding Children Board [LSCB]**

The Local Safeguarding Children's Board is a statutory board that has responsibility for ensuring that safeguarding is inherent in all our work with children, young people and families, and that safeguarding is seen as "Everybody's Business".

The work programme for the LSCB has been intensive with examples including; a safeguarding toolkit being developed and launched in February 2009, a Section 11 Audit of safeguarding practice, ongoing joint working with colleagues across Berkshire, an LSCB Conference aimed at training and raising awareness, developing and implementing a safeguarding training programme.

Following events nationally the local authority, police and health services have reviewed their child safeguarding arrangements with regard to staffing, child protection practice, workforce development, policy and procedure, management and governance. These action plans have been reviewed by the LSCB Executive. There is now further work to do in response to the Laming Report and the government action plan.

Further work for the LSCB will be required when the new version of "Working Together" is published later this year.

The LSCB will be required to publish an annual report on the effectiveness of safeguarding arrangements locally, and will be working more closely aligned to the Children and Young People's Trust

#### 4. ANNUAL PERFORMANCE ASSESSMENT 2008 [APA]

The APA is part of the integrated inspection framework for children's services which began in 2005. Ofsted is required under section 138 of the Education and Inspections Act 2006 to undertake a review of each council's services and to award a performance rating for them. The APA discharges these duties.

The aim of the APA is to assess the Council's contributions to improving outcomes for children and young people. It has a focus on the contribution made by the Council through its education and social care functions. It has regard to other services that have an impact on children and young people such as health, police and voluntary services.

The letter from the 2008 APA identifies a judgement on a four point scale on each of the five outcomes for children and young people as; inadequate (1), adequate (2), good (3) or excellent/outstanding (4).

The judgement on each of the five outcomes from the 2008 APA is:

- Be healthy [3] - **good**
- Stay safe [3] - **good**
- Enjoying and achieving [3] - **good**
- Make a positive contribution [4] - **excellent**
- Achieving economic wellbeing [3] - **good**

In addition to each of the five outcomes a grade is awarded based on three areas for judgement which for the 2008 APA are as follows:

- The Council's children's services and the specific contributions they make to improve outcomes for children and young people [3]
- The contribution services make to improving the five outcomes for children and young people [3]
- The Council's capacity to improve these services [3]

The overall grade has remained largely consistent with the 2007 APA; the main changes being the grade on be healthy was reduced from a 4 [excellent] to a 3 [good] and the positive contribution grade was increased from a 3 [good] to a 4 [excellent]. The inspectors noted many sustained and continuing improvements including strong leadership and good outcomes for children and young people.

The recommendations made as a result of the APA are being incorporated into future planning and some will be identified as new priorities at the end of this document.

The way in which such Inspections take place is changing from this year with a new style of Inspection being introduced called Comprehensive Area Assessment, which brings together a number of Inspectorates under one framework to determine how well people are being served by local public services. The APA process as we have known it will be changing and we will focus on our preparation for this new process alongside all our partners.

## **5. WHAT HAS CHANGED IN BRACKNELL FOREST?**

### **Population**

Bracknell Forest remains a growth area with several new major housing developments; however this has slowed recently due to the impact of the economic downturn. There are approximately 30,000 children and young people in Bracknell Forest which represents 27% of the total population, with around 15,000 pupils on roll in Bracknell Forest maintained schools.

### **Ethnicity**

The percentage of residents from minority ethnic groups is increasing steadily. School Census data, collected annually suggests that the proportion of school pupils from the BME population is growing, from 4% in 2001, 11.6% in 2006 to 13.9% in January 2008.

The presence of the Gurkha regiment at the Royal Military Academy in Sandhurst has led to a significant Nepali community being established in the south of the Borough. Increasingly members of this community are settling in the Borough with their extended families.

The School Census 2008 also showed that the number of different languages identified in school aged children totalled 70 [including English]. The borough average of English as an Additional Language [EAL] for the school population is 7.5%. It is important to note that whilst a significant number of languages are spoken they are in very small numbers, presenting more of a challenge when looking at the distribution of support and resources.

### **Deprivation**

Bracknell Forest is generally affluent [ranked 320 out of 354] on the Indices of Multiple Deprivation [2007] where 1 is the most deprived and 354 is the least deprived, Bracknell Forest is therefore seen as an area that does not experience the problems associated with deprivation.

However there are significant pockets of deprivation in the Borough which are not always apparent from the headline statistics. For instance, of the 126 wards comprising Berkshire, eight Bracknell Forest wards are in the top 50 most deprived.

The proportion of pupils entitled to free school meals is relatively low at 6%. However in nine wards this figure is substantially above average and recent data indicates a rising trend.

## 6. NEEDS ANALYSIS

Needs analysis supports the ongoing work of the Bracknell Forest Children and Young People's Trust, bringing together data and information to inform the business of the Children and Young People's Trust, including the Joint Commissioning Framework and the Children and Young People's Plan.

We have reviewed the original needs analysis completed in 2005, and this revised needs analysis and the accompanying data supplement, provide an overview of Bracknell Forest including a break down of a range of data to ward level, enabling a more detailed picture to emerge in relation to the needs across the borough and how these can differ when looking at individual geographical areas.

The needs analysis overall shows a positive picture of Bracknell Forest as a thriving, prosperous community, and this is largely an accurate picture. In ensuring that our children, young people and families have the best possible opportunities there is a need to look below this positive picture and address the issues that impact on life chances.

The information presented in the needs analysis and the data supplement largely support the current priorities in the Children and Young People's Plan however there are a number of **recommendations** as a result of this analysis for inclusion in the CYPP.

1. Continue to monitor the trends and outcomes in relation to children and young people's ethnicity, this includes improved use of data and information to inform planning, and address particular areas of need, [for example English as an Additional Language]
2. Work is undertaken to reduce the rising numbers of children who are obese.
3. Address the inequalities in health outcomes across the borough
4. Continue to address the concerns of young people about crime and bullying.
5. Continue to ensure that safeguarding children and young people remains a priority in the work of all agencies.
6. Continue to raise the achievement of pupils at all stages of their school career
7. Narrow the gap in educational achievement between children from low income and disadvantaged backgrounds and their peers.
8. Address the gap in attainment related to gender.
9. Continue to seek ways to support children and young people to make a positive contribution.
10. Support children, young people and families through the impact of the economic downturn.

The Executive Summary from the needs analysis can be found at Annex 3

## 7. PROGRESS AGAINST PRIORITIES 2008/09

**Our priorities are intended to be inclusive of all children and young people living and growing up in Bracknell Forest, however we do recognise that there are some groups of children and young people who may have additional needs and will benefit from additional support, such as children who are looked after, children with learning difficulties/disabilities and young carers.**

**Some of these groups are identified in the priorities to ensure that any additional needs are recognised by all partners and that all partners work together to provide support in the most effective way to ensure good outcomes.**

This section looks at the progress that has been made in achieving the priorities during 2008/09:

### BE HEALTHY

<b>BH 1</b>	All children and young people in Bracknell Forest have improved mental health and emotional wellbeing.
<b>BH 2</b>	Parents and carers make healthy choices for their child during pregnancy and throughout childhood.
<b>BH 3</b>	Children and young people understand the benefits of healthy eating and physical activity.
<b>BH 4</b>	Young people have a good understanding of sexual health and contraception.
<b>BH 5</b>	Children and young people know about the impact of substance and alcohol misuse, and fewer choose to misuse drugs or alcohol
<b>BH 6</b>	Children and young people looked after are healthy.
<b>BH 7</b>	Provision for children and young people with speech and language difficulties is recommissioned and developed across schools.

### Key Strengths

- APA 2008 awarded a grade 3 [good] for Be Healthy, and commented on many positive aspects such as multi-agency working in promoting healthy lifestyles, delivering good outcomes in terms of reducing teenage conception, schools participating in the National Healthy School Standard.
- The APA also stated that children and young people have a good access to a wide and effective range of CAMH [Child and Adolescent Mental Health] services. The effectiveness of Child and Adolescent Mental Health services (CAMHS) is performing well, with a score of 15, based on a self-assessment completed by BFC as part of the annual CAMHS Mapping Exercise. The assessment, undertaken by Bracknell Forest CAMHS Partnership, assesses performance in four proxy measures, each judged on a four point scale. Optimal performance is therefore 16.

- The Social and Emotional Aspects of Learning programme has been successfully implemented in all primary schools and the Pupil Referral Service and is being implemented in secondary schools.
- The Bracknell Pyramid Scheme which is managed by East Berkshire MIND was established to help children in primary schools build self esteem and resilience. The scheme receives funding from Extended Services and from the Prevention and Early Intervention grant [formerly Children's Fund]. In the year April 2008 to March 2009 the scheme expanded its service to 9 primary schools. 712 children in years 3 and 4 were screened using the Strengths and Difficulties Questionnaire [SDQ]. Through this screening 28% [196] children had their needs discussed by a multi-agency panel and 19% [135] children were selected for Pyramid Clubs. A small number of the remaining 61 children [1.25] were signposted to other agencies for support and the remaining 7% were already receiving support.
- Promotion of healthy lifestyles through extended services through specific activities and healthy eating, some examples of this include drug and alcohol information sessions, cycling trips, and cookery clubs. A successful food awareness day and physical activity day took place in June 08 and there is a planned Health Month in June which will encompass Food Awareness week in June 09
- 8 teachers participating in the PSHE accredited CPD programme. In total 24 teachers have achieved the accredited course.
- 33/38 schools have achieved National Healthy Schools Status.
- In 2007/ 08 89% of 5 – 16 year olds participated in 2 hours of PE and school sport within and beyond the curriculum. This is a 6% increase on the previous year. Workshops have been presented to schools on the government's five hour offer and the new PE and Sport Strategy for Young People (PESSYP).
- There is a robust and effective system for ensuring an initial health assessment is done on time. For those children looked after for more than a year in September 2008, 91% had a health assessment/dental check.
- A specialist mental health worker funded by the CAMHS grant has been appointed within CAMHS to work with Looked After Children, Youth Offending Service, children on the "edge of care" and to support foster carers.
- From April 08 a Strengths and Difficulties questionnaire has been completed by the carers of Looked After Children aged between 4-17 years in order to measure their mental health needs.
- The proportion of mothers smoking at the time of delivery has fallen in Bracknell Forest and was 12% in 2006 compared to just over 16% in 2005. This however is higher than Slough at 10% and Windsor and Maidenhead at 8% in 2006.
- The proportion of mothers breastfeeding has steadily increased over the period of 2003/04, 2004/05, 2005/06, and has remained higher than the national average



although breast feeding rates have fallen to as low as 50% in Great Hollands North, Bullbrook and Old Bracknell

- Overall Bracknell Forest has made good progress in relation to its teenage pregnancy figures and has the highest reduction in conceptions amongst 15 – 17 year olds in comparison to our statistical neighbours and the England average. 2007 data shows that the change rate from the base year in number of conceptions amongst 15 – 17 year olds is -51.9%
- Chlamydia screening rates are among the lowest in South Central area at 2.4% against a national target of 17.5% and a locally enhanced service has been proposed through GPs to improve rates. In addition proposals to establish three additional sexual health clinics have been funded centrally through the Strategic Health Authority allocation and a clinic in Maidenhead opened in March 2009.
- The highest percentage of young people using tier 2/3 substance misuse treatment services in 2007/08 were aged 16 [44%] followed by 15 and 17 year olds [24% each]. Five young people aged 14 or under were seen by tier 2/3 young people's treatment services in 2007/08
- Bracknell Forest had a higher percentage of young people in tier 2/3 substance misuse treatment services per 100,000 head of population [under 18] than the South East average.
- During 2007/08 19 young people were admitted to hospital related to alcohol, which is lower than the South East average. Seven young people were admitted to hospital related to drugs, which is lower than the South East average.
- The Berks East [PCT] Community Health Services have worked with the Bracknell Forest Council and Headteachers to agree a new service for mainstream primary and secondary schools. As a result, in September 2008, a new service, based at The Pines, was initiated. This service is one which provides a rolling programme of school based interventions, which serve to train and support school staff, and to provide group and individual support for children as needed. The service has developed and strengthened the role of the Speech and Language Assistant as a key provider. Joint working with health and education staff is also proving to be of real benefit.

#### **Areas for Development:**

- Focus on areas for development highlighted in the APA 2008 on the assessment waiting times for physiotherapy and occupational therapy services for children with learning difficulties/disabilities. This is being addressed and work will continue through this year.
- Further promotion of healthy lifestyles through extended services through specific activities and healthy eating e.g. Health Month in June 2009

- Support teachers in the submission of their Personal Social Health Education, [PSHE] portfolios and recruit teachers/non teachers onto professional development course.
- Support to those schools who have not achieved NHSS status, and to support schools to reach NHSS enhancement
- The Annual PE and Sports Survey in Schools for 2008/09 currently being undertaken with official results due in October. This will inform future plans and strategies to increase the involvement of young people to achieve active and healthy lifestyles.
- Review the range of mental health work being provided within Children's Social Care to ensure it meets identified need.
- Further work to gain agreement of the CAMHS specification with the Berkshire East PCT and the other East Berkshire Unitary Authorities.
- Care leavers have a low record of engaging with health assessments, and further work is to be undertaken to consider more effective ways of engaging them. There is less consistency in achieving review health assessments for LAC placed out of area. The Care Matters Implementation Group will focus on these areas for development in the coming year.

#### STAY SAFE

<b>SS 1</b>	Children and young people are safe from crime and anti-social behaviour in and out of school.
<b>SS 2</b>	Children and young people feel safe from bullying and choose not to bully others.
<b>SS 3</b>	Children and young people looked after have security and stability.
<b>SS 4</b>	Children and young people are safeguarded in an ICT environment.
<b>SS 5</b>	Children and Young People will be safeguarded through effective practice in implementing and monitoring thresholds and access to services.

#### Key Strengths:

- APA 2008 awarded a grade 3 [good] for Stay Safe, with many strengths identified including achieving a consistent understanding of the threshold for accessing safeguarding services, good performance in completing initial assessments, and core assessments, good safeguarding standards in the short term respite care unit [Larchwood], good performance on child protection plans and looked after children reviews.
- The LSCB have recently approved the Thames Valley wide joint Children's Services/Thames Valley Police protocol for responding to instances of missing

children and will monitor the effectiveness of services through the new national indicator N71 return.

- The Anti-Bullying Strategy, 'Safer Together, Safer Wherever' was circulated to stakeholders and launched 17 November 2008. The strategy is approved by the LSCB and is reported on to the LSCB by the Anti-Bullying Group, which is an LSCB sub group. The strategy is designed to determine the direction of Anti-Bullying Work in Bracknell Forest for the next two years. Many areas outlined in the Anti-Bullying Strategy Action Plan have now been completed. Drama and workshops on anti-bullying in schools and other agencies has increased along with the awareness and understanding of bullying and the impact on children and young people.
- A "Safe to Learn" a peer mentoring scheme managed by East Berkshire MIND to support young people who may be bullied through peer support has been successfully implemented in secondary schools in the borough. One secondary school Easthampstead Park won the "Diana anti-bullying award" for their scheme with all students involved receiving an individual award.
- The Early Intervention Project works with children and young people aged 8 – 14 who are experiencing difficulties and may be at risk of offending. During the year 08/09 47 [an increase of 8% on 2007/08] children and young people were referred to the project and were supported through one to one interventions and support, with other services agencies often involved in the support.
- The E-safety sub group of the LSCB was established in January 2009. The group has developed an action plan which is focussed on local awareness raising and training, based on the up to date guidance from BECTA.
- Between April 08 and March 09, 91% of statutory looked after children reviews were held within the timescales and 98% of looked after children participated in their reviews.
- All short break reviews were held within timescales. 95% of Permanence plans were completed.
- Eleven out of 82 looked after children had three placements or more in the previous year. The ages of these children ranged from 12-17 years reflecting the high percentage of older children in the BFC LAC population than nationally and thus at a higher risk of unplanned moves.
- Joint arrangement with Wokingham and Reading to commission foster placements through Independent Fostering Agencies has provided more placements within 20 miles
- The number of children placed with in-house foster carers increased from 28 to 35 during this year.
- The number placed in independent foster placements decreased from 22 in April 08 to 14 on 31 March 09.

- During 2008/09 the LSCB published and widely distributed safeguarding cue cards to professionals and adults in contact with children and young people, and also to children and young people themselves, to provide guidance on how to seek help and support when a safeguarding issue arises.
- Access to Services policy was approved by the Shared Processes Group and then by the LSCB on 26 September following on from consultation with partners, in accordance with JAR Action Plan requirements. A risk needs matrix was developed which has been widely distributed and is used in Common Assessment Framework Training to enable practitioners to make more effective decisions regarding referrals to Children's Social Care.
- Judgement of 'outstanding' for the short break care unit in both unannounced inspections during 2008-09; good judgement of the private fostering service in first Ofsted inspection in March 2009

### Areas for Development

- Multi-agency training as part of the LSCB training programme being developed and offered from autumn term 2009.
- New Anti-Bullying Strategy due 2011
- Responding to the outcomes of the Lord Laming review following the death of Baby Peter, and the Government's response, including the new "Working Together" Guidance due to be published later this year.
- Improve quality and consistency of assessments in adoption service as part of the action plan following the second inspection in March 2009, which judged the service as satisfactory with some outstanding aspects.

### ENJOY AND ACHIEVE

<b>EA 1</b>	Raise the attainment of pupils in the Early Years and Foundation Stage, including the relative performance of boys.
<b>EA 2</b>	Raise the attainment of pupils in Primary Schools, including the relative performance of boys
<b>EA 3</b>	Raise the attainment of pupils in Secondary Schools, including improving the relative performance of boys
<b>EA 4</b>	Ensure that children and young people with SEN/Disabilities enjoy and achieve through better coordinated support.
<b>EA 5</b>	Increase enjoyment through play and leisure opportunities for all children and young people.
<b>EA 6</b>	Make available sufficient, suitable and accessible school places to support

	demographic changes and the needs of learners.
<b>EA 7</b>	Support pupils with English as an additional language.
<b>EA 8</b>	Sustain support for Looked After Children and extend to 19 years [including care leavers]

### Key Strengths:

- APA 2008 awarded a grade 3 [good] for Enjoy and Achieve, with positive comments made about children at the end of the Early Years Foundation Stage exceeding threshold targets in personal, social and emotional development and communication, language and literacy, pupils achievement in mathematics at the end of Key Stage 1, the strong trend in improvement at Key Stage 3 in mathematics, science and boys' attainment in English. Also noted was the overall attainment and attendance of looked after children.
- In the Early Years and Foundation Stage [EYFS] results have improved slightly in personal and social education and in communication and language. The percentage with 78 points or more overall increased to 75% and is now above national levels. The performance of the weakest 20% improved narrowing the gap between these children and the rest.
- The percentage of girls achieving an overall good level of achievement - those children who achieve a score of 6 or more across the seven scales/across Personal Social Education [ PSE] and Communication Language and Literacy [CLL] and 78 points or more improved by 1%.
- At age 11 the key indicator of Level 4+ in English and mathematics has improved and is above both the national and regional averages.
- At Key Stage 4 the key indicator of 5+A\*-C including English and mathematics has improved and is now in line with the regional average. The gap between the performance of girls and boys on this indicator was reduced from 13% in 2007 to 11% in 2008.
- All parents who applied on time for a school place for their child have been offered one. Of these 91% of secondary school applicants were offered a place at one of their preferred schools and 94% of primary school applicants. Additional capacity will be created for September 2010 at Garth Hill, Edgbarrow, Ranelagh and Wildridings. Projects are underway to ascertain the feasibility to create further capacity at Crown Wood, Meadow Vale, Ascot Heath, Holly Spring and Sandy Lane.
- Further out of school activities for children and young people through extended services e.g. 'Summer of Fun' in Sandhurst, summer activities programme in Crowthorne, and 'Stay and Play' activities at schools.
- The Play Strategy has received approval and funding through a Big Lottery bid. A Play Ranger has already been recruited and plans underway to recruit more Play

Rangers, this work goes alongside plans to improve and develop the parks and play spaces in the borough.

- The Play Access Scheme funded by the Prevention and Early Intervention grant [formerly Children's Fund] enabled 99 children and young people from 65 families to access play schemes during the 2008/09 period, with a total of 910 places offered. Places are offered to children and young people who for some reasons may not be able to access play opportunities due to financial or other difficult circumstances.
- Established working groups of SENCOs and support service staff are responding to the local authority annual audit of SEN provision and reports. Developments are piloted within schools and shared with Headteachers. Current initiatives; developing teachers' skills and confidence in P level moderation, provision management and self evaluation.
- Translation of the "Welcome to Bracknell Forest" guide into Nepali, Hungarian and Urdu. Training delivered on EAL and cultural diversity in three secondary and six primary schools.
- Development of an "Induction and Support pack for admitting pupils with English as an additional language to schools.
- Well established 'Rights Respecting Schools' programme in schools across the borough.
- The integration of SEN and Disabled Children's Team has enabled closer working across social care and education in relation to children with disabilities. Larchwood Short Break Unit and Kennel Lane School have worked closely to ensure continuity of approach to disabled children within their care.
- The Aiming High for Disabled Children strategy has provided a clear and co-ordinated approach to providing short breaks and activities for 2009/10 and 2010/11.
- At the end of March 09 six out of 13 looked after children who had finished school at 16 achieved at least 1 GCSE, out of these two achieved 5 passes at grades A\* to C [not including English and Maths]
- The numbers of children looked after for 12 months+ participating in out of school hours learning (at 31st Mar 08) was 79% (equates to 48 out of 61 children).
- A part time Connexions worker for looked after children and Care Leavers has been appointed to work with over 16s LAC and Care Leavers
- An award ceremony was held in October 2008 for looked after children to celebrate attainment and positive attitudes to learning, it is intended this is now an annual event.
- The managed move policy has meant that no looked after children have been permanently excluded.



**Areas for Development:**

- Visits to schools and settings and external inspection of provision have highlighted the need for additional staff training in the Early Years Foundation Stage, especially in the areas of communication, language and literacy.
- Further work with parents to enable them to support their children in learning.
- Address the gaps in performance in relation to gender and ethnicity at all key stages.
- Address the gap between the performance of those from the most deprived households and others particularly in Key Stage 4.
- Implementation of new scheme to provide subsidy to improve access to activities for children and young people living in economically disadvantaged families.
- Cross branch development and dissemination of the National Strategy Inclusion Development Programme.
- Meet the requirement of the Care Matters Implementation for each school to have a Designated Teacher for looked after children by September 2009, and the Virtual Head Teacher for looked after children/role to be developed to meet all requirements.

**MAKE A POSITIVE CONTRIBUTION**

<b>PC 1</b>	Children and young people engage in positive community and voluntary activities.
<b>PC 2</b>	Children and young people have a range of choices of things to do and places to go.
<b>PC 3</b>	Children and young people participate in decision making and in supporting the community.
<b>PC 4</b>	Enable all children and young people to access wider community activities before and after school hours and in school holidays.

**Key Strengths:**

- APA 2008 awarded a grade 4 (excellent) for Positive Contribution with comments made that children and young people, including those with learning difficulties/ disabilities and those who are looked after are closely involved in strategic decision making, and that 98% of looked after children participated in their reviews and subsequent care planning. There was also a significant reduction in the number of young people who offend or re-offend, and young people being actively engaged in recruitment.

- There have been a wide range of school based events held through Extended Services to engage with children and young people across the borough on a range of issues, an example of this being the “Sandhurst would be better if” schools’ council conference.
- A Junior Citizen day was held in South Bracknell facilitated by Extended Services where around 280 children from year 6 attended a range of safety workshops from police, anti-social behaviour, internet safety, trading standards, ambulance, first aid and road safety. This was a very positive event and much enjoyed by the children and adults involved.
- Various other school-based events provided through extended services including family learning days, library based activities, summer fun activities, inter-generational activities and stay and play sessions.
- Children who are looked after are given free access to Bracknell Forest sports and leisure facilities along with the foster carers and family.
- The Tell Us survey has given the local authority area a rating in excess of 80% in relation to making a positive contribution
- The design and format of the Xpresionz website is being revisited to enable a wider representation of positive activities available for young people.
- The Youth Service have been leading on this area of developing places to go and things to do for young people. A pilot project has been established in Great Hollands, bridging the gap for young people between school and the community.
- An additional permanent youth centre establishment is being considered for Great Hollands and further meeting points are planned for elsewhere in South Bracknell.
- The Youth Forum have pioneered and led the Youth Opportunity Fund (YOF) and Youth Capital Fund (YCF) process. The Youth Opportunity Fund (YOF) has been targeting young people who have been excluded from accessing activities in school holidays by offering subsidised entry and transport. It has also been focussed on the voluntary youth sector groups to widen their appeal to young people.
- Members of the Youth Forum have designed and led a Borough-wide consultation event for young people, based on the Hear by Right framework. They presented the findings to the Children & Young People’s Trust and also to elected Members at a full Council meeting.
- The format for youth engagement and the election process for the member of the Youth Parliament (MYP) is being developed to include even more young people from a wider and more diverse background.

**Areas for Development:**

- Implementation of new scheme to provide subsidy to improve access to activities for children and young people living in economically disadvantaged families.
- Plan and deliver extended services in response to ongoing involvement and engagement of the Area Steering groups.
- Development of a new joint post of a “Vulnerable Children’s Worker” between Children’s Social Care and the Integrated Youth Support programme.
- The Youth Service has identified an objective within its Business Plan to offer more positive activities on Friday and Saturday evenings. This mirrors the national move to provide more opportunities for young people during weekends.
- Develop a more widely identified ‘offer’ of things to do and places to go for young people.
- Continue to reduce ratio of offending by looked after children, compared to offending by children not looked after [this was 6.4 in 2008/09 compared to 2.9 in 2007/08].

**ACHIEVE ECONOMIC WELLBEING**

<b>EW 1</b>	Children and young people take part in accredited award schemes.
<b>EW 2</b>	Raise participation and achievement of young people post 16.
<b>EW 3</b>	Young people aged 14 to 19 have access to a range of quality educational opportunities.
<b>EW 4</b>	Parent/Carers are supported in their role to enable children and young people to achieve the five outcomes.
<b>EW 5</b>	Develop effective support for young carers.

**Key Strengths:**

- APA 2008 awarded a grade 3 [good] for Economic Wellbeing with comments made that there was good assessment of learning needs of young people aged 14 – 19 , and young people receive good advice and support on education, employment and training, and that all care leavers are allocated a personal adviser and are provided with good emotional, practical and financial support.
- Accredited two day Health & Safety courses delivered at Portman Close & Connexions Centre. Eighteen young people attended the Health & Safety Course. Sixteen young people passed and gained accreditation. This is through the British Safety Council.

- September Guarantee (16 year olds) successfully implemented (2008) – participation at 16 remains high.
- September Guarantee (17 year olds) being implemented (2009) – target to increase participation at 17.
- Increased applications for post-16 provision in September 2009 reported by providers.
- Area prospectus in place.
- External audit of Information Advice and Guidance [IAG] provision undertaken.
- Ranelagh School accredited to offer International Baccalaureate.
- Successful application to Diploma Gateway – new qualifications to be introduced in 2010.
- Bracknell & Wokingham College continue to offer Increased Flexibility and Young Apprenticeship provision.
- Continued improvement in GCSE (and equivalent) results at age 16.
- Parenting support has increased significantly in the borough with a range of programmes being offered across all levels of need, examples include Solihull delivered through Children's Centres in partnership with a Health Visitor, Pyramid for Parents being delivered across schools in the borough, Webster Stratton delivered through the Behaviour Support Service, and a Parenting Programme offered through the Youth Offending service.
- A Parenting Commissioner has been identified for the borough who will champion and steer the development of Parenting support, aided by a Parenting Coordinator. In addition through additional grant funding "Parenting Experts" have been recruited to deliver evidence informed programmes.
- Publication of 'Strong Foundations' strategy in 2008 , and subsequent review of action plan took place early in 2009, with a view to updating information and refocus the priorities for the ongoing development of parenting support.
- A Parenting Teenagers Handbook was developed and published; this complements the "Safe Parenting Handbook" already available.
- Development of the Family Support Adviser (FSA) role through the Extended Services programme, 21 advisers are now in post meeting the need in 29 schools.
- Young Carers Project managed by Bracknell Forest Voluntary Action worked with 34 children and young people aged between 5 to 18 during the year 2008 /09, providing a range of support including a weekly club split into a younger age band [5 – 12] and an older age band [12 – 18], some holiday activity and individual support.

- A small group has been developing a multi-agency strategy to support young carers, this work has engaged the Young Carers Steering Group, and directly engaged young carers themselves. It is anticipated this work will be completed in the summer 2009.
- The Youth Service offers a range of accredited learning opportunities which lead on to achievement in award schemes. These range from a local Berkshire wide scheme to the Duke of Edinburgh Award Scheme.

#### **Areas for Development:**

- Rapid English Programme to be delivered at the Connexions Centre from June 09.
- Further work on 16-19 Funding Transfer arrangements in 2010.
- Further improvement required in results at age 18/19.
- Common Application Process to be developed to allow young people to apply on line for Post 16 learning to be fully in place by 2011.
- Curriculum review underway at several schools to ensure appropriate range of opportunities to meet the needs of all young people (identified as development need in some school inspection reports)
- Continue planning for the raising on the participation age to 17 in 2013.
- Develop commissioning plan as part of the 16-19 Funding Transfer arrangements.
- Further map parenting support services, and work with partners to develop appropriate pathways for parenting support.
- Agree final Young Carers Strategy and begin work to implement actions.

#### **WORKING TOGETHER**

- WT 1** Better targeting of services towards the identified needs of children and young People.
- WT 2** Children and young people will be safeguarded.
- WT 3** Partners work together to improve outcomes for young people aged 14 to 19 including those who have additional needs.
- WT 4** Systems established to support integration of work across Children's Services and the sharing of information between professionals.
- WT 5** All practitioners working with children and young people are appropriately trained, qualified and are able to access professional development opportunities to support their role.

**WT 6** Increase access to and take up of a wide range of services in one place, including education, health and social care and specialist services.

**WT 7** Implementation of the Children's Trust

Working together is a key principle informing the way in which the CYP Trust and its associated work streams will ensure improved outcomes for children and young people and their families.

The APA 2008 awarded a grade 3 [good] for capacity to improve, it commented on the fact that there had been incremental improvement in all areas identified in the JAR and the APA 2007. It noted that there were good plans in place, with most of these being multi-agency in nature, and based on thorough needs analysis.

There are many examples in this document, demonstrating the way in which children and young people and families with additional needs are targeted to receive additional support, e.g. the use of the Common Assessment Framework, Integrated Care Pathways, and Webster Stratton Parenting provision. There are also many examples of support for all children and young people through universal services such as Health Visiting, Schools, etc.

Safeguarding children and young people is everybody's business, and this has been demonstrated as a strength in Bracknell Forest, the APA 2008 awarded a grade 3 [good] and the LSCB has continued to drive the agenda for safeguarding through some very difficult and challenging times, the death of Baby Peter and the consequent review by Lord Laming remind us that safeguarding must remain a high priority and can only be effectively achieved by all agencies working together.

The effectiveness of partnership working is evident in the description of the working groups that report to the CYP Trust, with many achievements noted, including the 14 – 19 Partnership developing plans and moving forward against a fast changing policy background, ICT developments have included the implementation of the Integrated Children's System in Children's Social Care, Information Sharing Protocols, and the ongoing development of Contact Point.

Workforce development continues, with multi-agency training supporting a number of key work areas such as safeguarding, common assessment, mental health and substance misuse. There is recognition that across professional groups we share many skills and competencies, and through the development of facilities to accommodate a number of agencies under one roof, such as Children's Centres, and Portman Close, this is becoming more embedded and being seen as the "norm" rather than the exception.



## **8. NEW PRIORITIES 2009 - 2011**

In our original CYPP we had 25 priorities for improving the lives of children, young people and families in Bracknell Forest. They were identified as a result of extensive consultation and a thorough needs analysis.

As a result of the APA 2008, refreshment of the needs analysis and the work of the CYP Trust and consultation with partners and stakeholders, we have revised our list of priorities and added new ones where this is appropriate and evidence based, and either removed or reworded some of the existing priorities to ensure they were measurable, and able to demonstrate improved outcomes for children, young people and families.

The table attached below shows our strategic priorities as agreed by the CYP Trust for the coming year and shows where they link into other key plans and strategies across the CYP Trust Partners

### **Priorities for 2009 - 11**

The table below shows the priorities for the CYP Trust for 2009 - 2011. The delivery of the priorities is through a range of plans and strategies which are shown in the table in annex 4.

	<b>BE HEALTHY</b>	<b>LAA Target</b>	<b>National Indicator</b>
<b>BH 1</b>	All children and young people in Bracknell Forest have improved mental health and emotional wellbeing.	✓	50 , 51, 58, 69, 72
<b>BH 2</b>	Parents and carers make healthy choices for their child during pregnancy and throughout childhood.		53, 55, 56, 126, 198
<b>BH 3</b>	Children and young people understand the benefits of healthy eating and physical activity.	✓	52, 55, 56, 57
<b>BH 4</b>	Young people have a good understanding of sexual health and contraception.	✓	112, 113
<b>BH 5</b>	Children and young people know about the impact of substance and alcohol misuse, and fewer choose to misuse drugs or alcohol		115
<b>BH 6</b>	Children and young people looked after are healthy.		58
<b>BH 7</b>	Reduce the waiting times for children with learning difficulties/disabilities for physiotherapy and Occupational Therapy.		54

	<b>STAY SAFE</b>	<b>LAA Target</b>	<b>National Indicators</b>
<b>SS 1</b>	Children and young people are safe from crime and anti-social behaviour in and out of school, and fear of crime is reduced.	✓	111, 19, 43, 45, 46
<b>SS2</b>	Children and young people feel safe from bullying and choose not to bully others.	✓	69
<b>SS3</b>	Children and young people looked after have security and stability.		61, 62, 63, 99, 100, 101, 147,
<b>SS 4</b>	Children and young people will be safeguarded through effective safeguarding practice by practitioners in all agencies.	✓	59, 60, 61, 64, 65, 66, 67, 68, 70, 71
<b>SS 5</b>	Parent/Carers are supported in their role to enable children and young people to achieve the five outcomes.		161, 162, 163, 164, 165

	<b>ENJOY AND ACHIEVE</b>	<b>LAA Target</b>	<b>National Indicators</b>
<b>EA 1</b>	Raise the attainment of all pupils at the Early Years and Foundation Stage, and in primary and secondary schools.	✓	72, 73, 74, 75, 76, 77, 78, 83, 84, 85, 86, 87, 92, 93, 94, 95, 96, 97, 98, 99, 100, 101, 102, 104, 105, 107, 108, 114.
<b>EA 2</b>	Narrow the gap in educational achievement between children from low income and disadvantaged backgrounds and their peers.	✓	92, 93, 94, 95, 96, 97, 98, 99, 100, 101, 102, 106,
<b>EA 3</b>	Ensure that children and young people with SEN/Disabilities enjoy and achieve through better coordinated support.		54, 103, 104, 105
<b>EA 4</b>	Increase enjoyment through play and leisure opportunities for all children and young people.		88, 110, 199
<b>EA 5</b>	Make available sufficient, suitable and accessible school places to support demographic changes and the needs of learners.		
<b>EA 6</b>	Monitor trends and outcomes in relation to pupils from BME [Black and Minority Ethnic] groups, in order to target and provide additional support where required.	✓	107, 108
<b>EA 7</b>	Sustain support for education of LAC and extend to 19 years (including care leavers)	✓	99, 100, 101, 147, 148

	<b>POSITIVE CONTRIBUTION</b>	<b>LAA Target</b>	<b>National Indicators</b>
<b>PC 1</b>	Children and young people engage in positive community and voluntary activities, take part in accredited award schemes, and have a range of choices of things to do and places to go.		88, 110
<b>PC 2</b>	Children and young people participate in decision making and in supporting the community.		88, 109
<b>PC 3</b>	Enable all children and young people to access wider community activities before and after school hours and in school holidays.		88, 109, 110

	<b>ECONOMIC WELLBEING</b>	<b>LAA Target</b>	<b>National Indicators</b>
<b>EW 1</b>	Raise participation and achievement of young people post 16.	✓	79, 80, 81, 82, 85, 90, 91, 106, 117
<b>EW 2</b>	Young people aged 14 to 19 have access to a range of quality educational opportunities.	✓	45, 79, 80, 81, 82, 86, 90, 91, 106, 117
<b>EW 3</b>	Develop effective Support for Young carers	✓	135,
<b>EW 4</b>	Support children, young people and families through the impact of the economic downturn.		116, 118,

## NEXT STEPS

This review has shown that considerable progress has been made in addressing the priorities identified in the Children and Young People's Plan 2006 - 2009.

The Annual Performance Assessment from 2008 has re-enforced the fact that services in Bracknell Forest work well together and consistently provide a good service for children, young people and families.

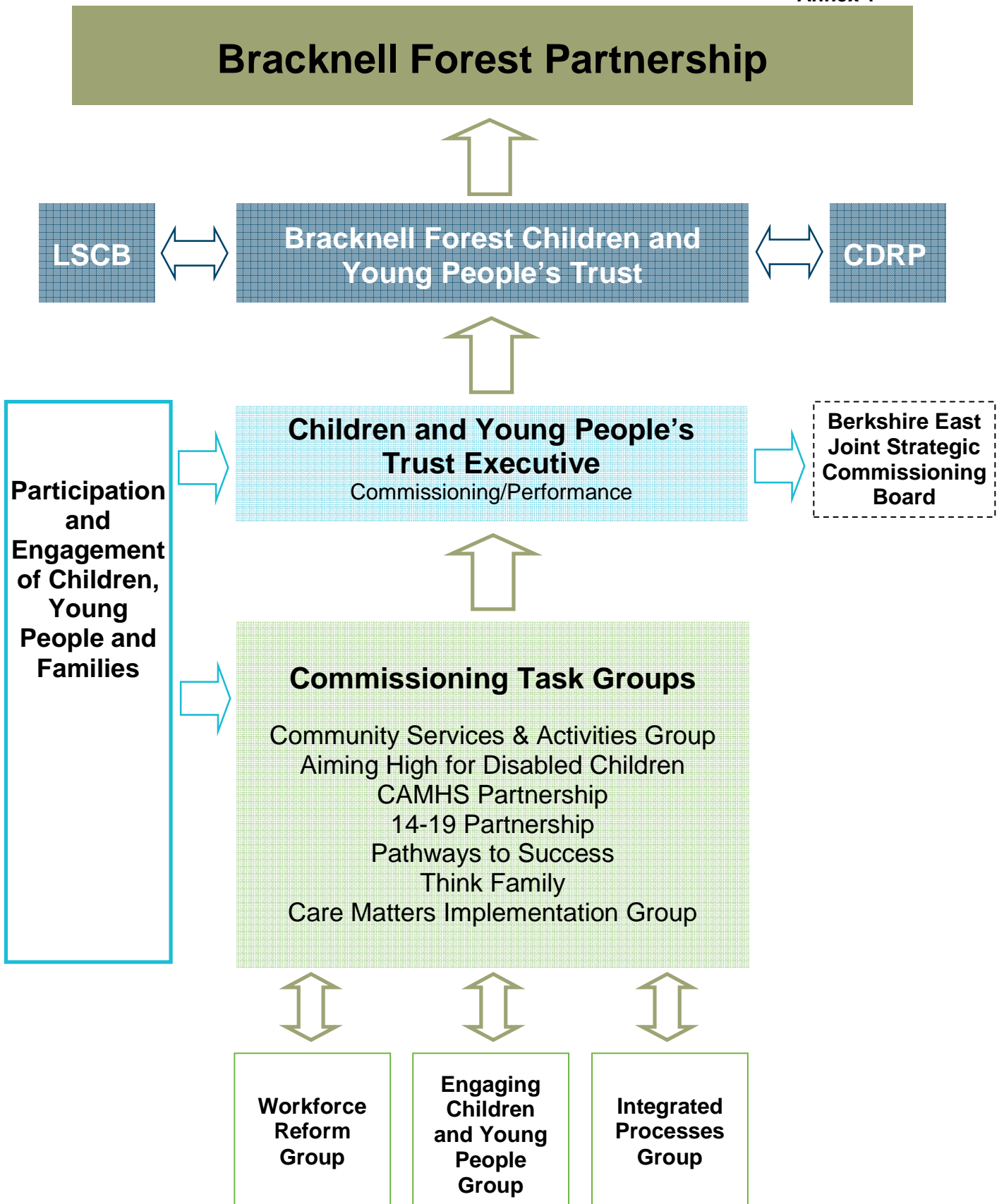
There are many challenges in the year ahead for all the partners in the CYP Trust to ensure that this positive progress is maintained and that we continue to work together to achieve our vision. This must be achieved in a climate of increasing economic pressures, and greater accountability to the children, young people and families who use our services.

New legislation on Children's Trusts, and the role of the Trust in developing a new Children and Young People's Plan by 2011 will be central to our work programme in the coming 18 months.

We have identified areas of development throughout this plan. These will be addressed through the working groups, through identified plans and strategies, and monitored through the Children and Young People's Trust arrangements.

Strengthened joint commissioning arrangements, performance management and governance for the Trust will provide a clear framework for ensuring that we are able to meet the challenges ahead.

Our success will be measured on whether we can deliver a Children's Trust in action, that is; integrating services at the point of delivery, supported by a shared understanding and processes, with a clear and jointly agreed plan that is owned by all partners and reflective of the needs of children, young people and families in Bracknell Forest.



## PROGRESS MADE BY WORKING GROUPS

### Prevention and Early Intervention Group [PEI]

Prevention and early intervention remain key strands of the national Children's Plan: *Building Brighter Futures* [DCSF 2008], and *Healthy Lives, Brighter Futures* the joint strategy for children and young people's health [DCSF and DH 2009] and many of our local plans and strategies including the CYPP.

The PEI Group has taken the lead in, working closely with partners in the third sector, and developing preventative services that support the delivery of a number of the priorities in the CYPP.

Prevention and early intervention must remain high on the agenda this year partners will work to continue to embed this into all areas of work across the CYP Trust. There is a particular emphasis on continuing to engage, support and build relationships with partners in the third sector to deliver services that support children and young people. The work of this group will be mainstreamed into other working groups and the CYP Trust will monitor through the CYP Trust Executive.

Key achievements in the last year include further expansion of services directly supporting children and young people. At least 70% of the funded services are provided by third sector organisations. Some examples of these are:

- **Pyramid for Children** offers support for children in primary schools through building their self esteem and resilience. Three key stages form the programme. Firstly a screening stage where all Year 3 pupils are assessed, secondly a selection of young people from this screening are targeted to receive support through a Pyramid Club, run after school for a ten week period, and thirdly signposting on to further support should this be required.
- **Pyramid for Parents** offers a complimentary programme of support for parents, which enables parents to be more effective in their role through building their basic skills and knowledge to promote and support their Childs emotional health and well being. This programme has been well received by parents and now forms a significant strand of the Parenting Strategy "Strong Foundations"
- **'Safe to Learn' peer mentoring** supports the delivery of the Anti-Bullying Strategy this was successfully rolled out in Secondary Schools and is now being developed within primary schools.

Young people who have received support [mentees] have commented:

- *"It has helped me lots with confidence building"*
- *"I made some friends in the quiet room"*



- *"I always get bullied and now I can get away from it"*
- *"Helps me get out of trouble"*
- *"It has given me confidence to talk to people about things"*

Young people trained to provide support [mentors] have commented:

- *"There is great satisfaction from knowing you can help other people and I've learnt a lot of responsibility from knowing that younger children are looking up to me"*
- *"I have gained communication skills and learned to listen to their peoples problems attentively"*
- *"I have gained lots of experience in how to deal with difficult issues involving younger pupils and their problems at home and at school. I have learnt to discuss issues openly"*
- **Early Intervention Project** (Youth Offending Service)- designed to address the needs of children aged 8 -13 who have been identified as being at risk of having problems during the transition from primary to secondary school, of becoming socially excluded and at risk of becoming involved in offending at some stage. The project has been evaluated externally and this evaluation has shown its positive impact. It recently expanded with additional funding from the Crime and Disorder Reduction Partnership,
- Preparing strategy for Young Carers - this has included investigating the support and services available to young carers, identifying the key issues for them and the difficulties they experience, It has considered ways in which support can most effectively be provided. A multi-agency strategy to support young carers will be completed in summer 2009.
- Continued development of C&YP Voluntary Sector Forum including administration of Children's Workforce Development Council [CWDC] partnership grant, aimed at building the capacity and participation of the third sector in the development of the workforce.
- A number of funding streams have been successfully combined and allocated to projects following the commissioning cycle identified by the DCSF; this area of work will develop further within the Children's Trust Joint Commissioning Framework.

### **Child Adolescent Mental Health Services [CAMHS] Partnership**

The CAMHS Partnership has overseen the implementation of the strategy "We all Have a Part to Play ".It continues to monitor the delivery of Comprehensive CAMHS in Bracknell Forest, the Integrated Care Pathways for Primary and Secondary aged children, and has contributed to the development of a service specification for Tier 3 CAMHS across Berkshire East, working closely with partner authorities. The National CAMHS report has been responded to and proposals from this are being incorporated

into the local strategy, this is still in draft form but it is planned to have new updated CAMHS strategy in place for 2009/10.

Key achievements include:

- The Partnership has formed closer links with the work of adult services through the inclusion of a representative from the adult Community Mental Health Team.
- Undertaking an annual self assessment based on the delivery of four proxy indicators. Significant progress has been made over time and the score in January was 15 out of a possible 16.
- One of the tasks of the Partnership is to monitor the implementation of a range of services and supports identified in the CAMHS Strategy "*We all Have a Part to Play*", this includes monitoring the two Integrated Care Pathways for 5 – 11 and 11 – 16 and has experimented with a model for young people 16+.
- A service level agreement has been developed with Berkshire Health Care Trust to address identified gaps in Tier 2 services.
- Targeted Mental Health in Schools [TaMHS] project to be funded in 2010/11, proposals have been developed and will be implemented in line with the national programme.
- The Partnership has also contributed to the development of a service specification for Tier 3 CAMHS services across Berkshire East, working closely with partner authorities.
- The National CAMHS report has been responded to and proposals from this are being incorporated into the local strategy, this is still in draft form but it is planned to have new updated CAMHS strategy in place for 2009/10.
- The Partnership will also continue to monitor the various workstreams within the strategy, including the Integrated Care Pathways models.

### **Parenting Strategy Group**

The Parenting Strategy Group has reviewed the delivery of "*Strong Foundations*" the multi-agency strategy to support parent/carers in the borough, and has updated the action plan as a result. Parent engagement, effective parenting programmes and new appointments have all supported the successful delivery of parenting support in the borough.

Parenting support will continue to be a core strand of national policy, with a significant emphasis now being placed not just on parenting, but on a "Think Family" approach and work will continue to develop and deliver these initiatives. Some key tasks in the coming

year will include identifying referral routes/pathways to accessing parenting support and advice, further development of the provision of good information to parent/carers and families, monitoring and evaluating current programmes to ensure they are having an impact and improving outcomes for children, young people and families, developing and implementing "Think Family" approach, and seeking greater engagement and involvement of parent/carers in service planning and delivery.

Key achievements in the last year include:

- Identifying a "Parenting Commissioner" who will champion parenting support across the local authority
- Recruiting additional staff, this includes the appointment of a Parenting Co-ordinator which is crucial to ensuring the smooth delivery of the strategy, and a Principal Parenting Practitioner, responsible for delivering parenting support/parenting programmes using a structured, evidence based approach. Also recruiting Family Support Advisor role within schools.
- Developing a greater understanding of the variety and strength of parenting support available in the Borough and working towards developing clear information in relation to what support is available.
- A review of the Strong Foundations Strategy Action Plan has ensured progress remains on task and new projects and ideas can be incorporated into the strategy.
- Development and publication of a 'Parenting Teenagers Handbook' aimed at providing advice and information to parents of teenagers, this complements the "Safe Parenting Handbook.
- Engagement with the national programme of training to develop the skills and capacity to deliver evidence based programmes locally.
- Continued delivery of various programmes to support parents which include, Pyramid for Parents, Webster Stratton, Solihull Parenting, Triple P [through the Youth Offending Service], a series of one day programmes targeting identified issues such as play, teenagers, behaviour.

### **Shared Processes Group**

The Shared Processes Group has continued to steer the ongoing development and implementation of the strands of work that support integrated working on the front line. These include the Common Assessment Framework now fully embedded in the borough, developing an Information Sharing Protocol and associated materials, preparation for the implementation of Contact Point, and the Section 12 Childcare Act Duty to provide a comprehensive Family Information Service.

Work will continue on all the strands that support integrated working on the front line

which includes developing a coordinated training programme to support integrated working, developing the role of "lead professional" and working on further development of new and developing ICT initiatives to support integrated working.

Key achievements made include:

- The Common Assessment Framework now fully embedded, continues to be well used with over 450 assessments completed to date. A review of the process has recently been undertaken, and new materials developed to support the process will be available for practitioners in the summer, these materials include the development of a risk, needs matrix giving practitioners information to support their judgement and assessments and consider where needs might be most appropriately met, through either universal, targeted, specialist or crisis intervention.
- CAF training is ongoing with four sessions planned in the coming year, targeting up to 80 practitioners from all agencies. E-learning modules on CAF and Information sharing are also available to support training and knowledge development.
- Parent/carers and children are given the opportunity to comment on their assessments, and some of the comments made are shown below.

An Information Sharing Protocol was agreed by the Children and Young People's Trust during 2008, and is supported by the Cross Government Guidance on Information Sharing, an information sharing cue card has been developed as part of the "Safeguarding Toolkit" and the pocket guide on information sharing has been widely distributed.

Contact Point is scheduled to become available in Bracknell Forest towards the end of 2009, and work has been underway to ensure readiness, this includes ensuring data is as accurate as possible, developing protocols to support the process, liaising and communicating with partners, and undertaking initial shielding of records where relevant and appropriate.

The Integrated Children's system [ICS] was implemented during 2008; work continues to roll out further modules, within the DCSF timetable.

The Primary and Secondary ICPs are both well established and good mechanisms are in place for meeting the needs of children and young people through these processes.

### **Community Activities and Services Group**

This group newly formed this year has developed out of the original Extended Services and Children's Centre Group; it has a wider focus encompassing Extended Services, Children's Centres and Integrated Youth Support. Representatives from all three areas meet on a monthly basis to ensure progress remains on target, and then a wider network meeting of multi-agency partners meets three times per year to ensure all partners with an interest in Community Activities and Services are engaged in ongoing discussion, planning, consultation and networking.

Progress on the three key areas is shown below

Progress on the implementation of **Extended Services** is assessed as 'green' – there are plans in place to continue implementation with good progress and evidence of good outcomes.

In March 2009 76% (28) of schools had full or sustainable extended provision.

Some key achievements in the last year include:

- In all areas there have been Area Steering Group (ASG) meetings, with the opportunity taken to refresh the area plan, reviewing existing objectives, suggesting new areas and re-prioritising. There has been good engagement of all partners.
- Nine schools are making good progress towards the Quality in Study Support [QiSS] recognition scheme. Several of the other schools are preparing portfolios at emerged level which will be ready at the beginning of the autumn term. First four schools accredited at 'emerged' level for their Quality in Study Support.
- The development of the Family Support Adviser (FSA) role is progressing well. Twenty one advisers are now in post meeting the need in 29 schools. More are expected to be in post shortly. The Council part funds their salary costs and provides an induction and training programme, networking and support.
- Particular notable initiatives include Inter-generational work, healthy living initiatives, raising self esteem through tug-of-war, participation in Northern Parishes arts festival, and a very 'Summer of Fun' in Sandhurst, which will be repeated this year.
- A Nepali Community Support Worker has been employed who will work 3 days a week offering help and advice to the Nepali community in Sandhurst and the surrounding areas. The worker will be based in The Spot (Sandhurst Youth Centre). This is a jointly funded post and a huge step in helping this large community within the borough.

Work will continue to deliver the full core offer of Extended Services in the coming year, tasks include:

- Implementation of a new scheme to provide a disadvantage subsidy to children living in economically disadvantaged families.
- Work with schools to ensure sustainable Extended Services administration and co-ordination.
- Further development and embedding the role of Family Support Advisers.
- Working with schools separately to help them achieve in all five 'core offer' areas.

- Development of, and consultation on, an updated strategy to support the delivery of Community Activities and Services.

Partnership working remains a strength of **Children's Centres** and an holistic approach across agencies improves outcomes for parents/carers and children e.g. a speech, language and communication programme is being developed by a joint working group of PCT, Symbol [an independent Speech and Language provider], children's centres and early years staff to provide a unified programme of support to parents/carers, children and staff in children's centres and early years settings.

The focus of the work of the centres continues to be that of early intervention and prevention from pre-birth through to school age. Evidence is already emerging that the centres are beginning to have an impact e.g. the Health Visitors are able to refer mothers with low level Post Natal Depression to the centres for support and are thus running fewer PND groups. Parents are also being supported in returning to work through a range of activities e.g. confidence boosting sessions, basic skills courses and easy access to JobCentre Plus information.

Services are also offered to specific groups e.g. Young Parents have a weekly lunch club with their children and also a Youth Club that they can attend on their own. They have also visited Reading University as part of the Aiming Higher scheme in order to raise their aspirations for themselves and their children.

A children's centre action plan has been developed around national and local Key Performance Indicators outlining existing and future activities. The plan is also cross referenced to the Local Area Agreement [LAA] and the Children and Young People's Plan [CYPP].

A broad statistical baseline has been established which is used to target services where most needed. The data will also be used to monitor and evaluate the progress of the centres and changes will be made where required.

Three of the phase two centres have been awarded full core offer status with the remaining three due to achieve full core offer status by February 2010. It was agreed with the DCSF that the proposed three phase three centres should be reduced to two and sites have been identified according to government criteria. These centres are due to be designated by January 2010 at the latest, but activities are already taking place in these areas and once Advisory Boards have been established, designation can be applied for.

Under the umbrella of **Integrated Youth Support** work has been underway to ensure that those services that work with young people are more integrated and focused on delivering the implementation of *Youth Matters [DfES 200?]* and *Aiming High for Young People: A Ten Year Strategy for Positive Activities [DCSF 2008]*.

The staff teams based at Portman Close is made up from a range of agencies and backgrounds including Youth Services, Connexions, Education Welfare, Teenage Pregnancy, Family Adolescent Support Service and Care Leavers Team.

A number of facilitated days were held with all the practitioners from statutory and voluntary agencies working with young people to determine the progress that has been made and consider key actions to support further development. Evidence from this day and monitoring of progress made on implementing Integrated Youth Support showed that the national Targeted Youth Support (TYS) benchmark was achieved.

Work continues to develop Integrated Youth Support and one element of this "Targeted Youth Support"; working with more vulnerable groups is being embedded across the area. Examples of this include the recent appointment of a "street based youth worker" and plans to appoint a "Vulnerable young people's worker" jointly with Children's Social Care. Plans for new and refurbished youth centres have been established.

The Xpresionz website originally developed as a way of providing young people with information is being reviewed and updated and within this a plan for 'places for young people to go' is to be developed and made available on the website.

### **Aiming High for Disabled Children Working Group**

This group has lead responsibility for developing and implementing the *Aiming High for Disabled Children* initiative, and was formed in June 2008. The group has strengthened and developed positive local partnership working. The Aiming High for Disabled Children [AHDC] Strategy was developed for Bracknell Forest incorporating the views of parent/carers, over 70 disabled children and young people, and practitioners; this strategy was approved by the DCSF and work is now underway to progress the actions.

A Development Manager for AHDC has been appointed, and parent/carers continue to be fully engaged in the process through the Steering Group

A local voluntary organisation, Kerith in the Community [Kerith Parent Group] secured government funding to run an Aiming High for Disabled Children event including training for staff on parent participation.

Having secured funding the implementation of the AHDC strategy is the key focus for the next two years, some additional resource is being provided by the DCSF to improve transitions for children and young people moving into adult services.

When AHDC was announced by the DCSF there were two funding streams to support its development and implementation, one was through the local authority and was "ring fenced" for the purpose of the initiative; the other was through the PCT which was not "ring fenced". However NHS Berkshire East has prioritised Aiming High in its Operating Plan for 2009 /10 and has committed £68,000 for Aiming High in Bracknell Forest, as well as the Capital committed in the Holyport Manor respite facility.

### **Care Matters Steering Group**

The key aim of this group is to act as the strategic planning group to ensure the implementation of "*Care Matters Time to Deliver for Children in Care*" published by the DCSF in 2008, it sets out a framework to ensure that the opportunities for children in

care are maximised and outcomes are improved.

The group has identified strengths and gaps in the service for looked after children and vulnerable children on the edge of care and is working to meet these in a variety of ways. A range of services to support young people who may be at risk of coming in to care, are now co-located at Portman Close.

A recent audit undertaken by the group identifies further areas for development for the group to address to ensure Care Matters is implemented to support all our looked after children and young people.

The Corporate Parenting Advisory Panel is established, this is chaired by a Councillor and is attended by Council Members, the Executive Member for Children and Young People, Senior Officers and invited guests.

The voice of children and young people looked after is represented through the Children in Care Council, which is jointly chaired by a Councillor, and is attended by children and young people looked after, supported by the Child Participation Officer and Head of Service for looked after children. Key achievements through the Children in Care Council are the development of a newsletter for children and young people looked after called "Say it Loud, Say it Proud", and the development of "The Pledge, which is the Council promise to children and young people looked after about the way in which they will be supported.

The Pledge has been adopted by the full Council, and has also been agreed by the Children and Young People's Trust.

### **Workforce Strategy Group**

The Workforce Strategy Group has continued to support the delivery of the key priority areas which are recruitment of staff, retention of staff, promoting integrated working, leadership and management and safeguarding. The group has revised its membership to include a wider scope of the workforce, and has established a system of highlight reporting to ensure information is shared on progress being made across the range of agencies/services.

The publication of the Children's 2020 Workforce Strategy [Children's Workforce Development Council] has clarified a definition of the core workforce and the wider workforce, and provided a clearer framework on which to base future work. The Workforce strategy is currently being revised to ensure it supports the development of a workforce that is fit for purpose.

Key achievements in the last year across the workforce include:

- Children Centre's enabling the co location of practitioners including Early Years and Child Care, health visitors, parenting practitioners, CAF Co-ordinator and Family outreach workers.
- Co location of speech and language therapists and school nursing service into one



Bracknell Forest location at the Primary Professional Centre.

- Level 1 safeguarding training has been expanded to incorporate more evening and weekend sessions to accommodate events for EYCCP and for the wider workforce.
- Recruitment of designated nurse in the PCT responsible for rolling out safeguarding training.
- Training Programme established across the children's workforce for Anti Bullying, as part of the delivery of the Anti-Bullying Strategy.
- Recruitment and retention of key-workers in social care and teaching improved – including involvement with the Newly Qualified Social Worker Pilot Programme.
- Multi-agency CAF training programme established across the workforce including e-Learning modules on CAF and Information Sharing.
- Full engagement with the National Academy for Parenting Practitioners to ensure staff have access to training on evidence based parenting interventions.
- Through the Children's Workforce Strategy Partnership Programme funded by the Children's Workforce Development Council a workforce Pack developed by Bracknell Forest Voluntary Action for the voluntary sector has been developed, this highlights services, training and support available to the third sector in workforce development.
- Sharing information of the requirements of the Vetting and Barring Scheme across the workforce.
- Engagement with the CWDC funded Youth Workforce Development, with senior managers in Integrated Youth Support and Connexions engaged in the leadership programme currently.
- A Consultant has been commissioned to conduct safeguarding training needs analysis of the workforce across East Berkshire.

The publication of the Children's 2020 Workforce Strategy [Children's Workforce Development Council] has clarified a definition of the core workforce and the wider workforce, and provided a clearer framework on which to base future work, therefore the Workforce strategy is currently being revised to ensure it remains fit for purpose and supports the development of a workforce that is fit for purpose, some tasks in the coming year include:

- Establishing a comprehensive children's workforce induction programme – awaiting further information of this programme from the CWDC.
- Delivering training to practitioners to support the implementation and roll out of ContactPoint.

- Developing a rolling programme of training to support the core skills required for integrated working including, CAF, Information Sharing, Lead Professional and Contact Point.
- Sharing the implications of the Vetting and Barring Scheme across the workforce, ensuring good communication and clear information is available.
- Piloting a workforce qualifications audit tool in the Early Years, Child Care and Play Team in partnership with Windsor & Maidenhead and Reading

### **Engaging Children and Young People**

There are many positive examples of the engagement of children and young people across service planning and delivery.

Engagement has taken the form of direct consultations, questionnaires and evaluations, young people being involved in interview processes, and some through young people's attendance at meetings and participation in staff interviews.

This is not an area of work that will ever be concluded, there is a recognition that we must at all times consider and actively seek the views of children, young people and their families and demonstrate this within our plans, strategies and ongoing direct work on a day to day basis.

Some examples of engagement include:

- Ofsted have carried out an annual 'Tell Us' survey of children and young people across England, seeking their views about their local area, including questions to cover the Every Child Matters five outcomes. The survey is carried out with children in schools Years 6, 8 and 10. The results of this survey now inform some of the national performance indicators, and provide information to support local plans and services, for example the views expressed by children and young people about bullying will be addressed by the Anti-Bullying Strategy Group, views about positive activities will be addressed by the Integrated Youth Support Strategy, views about health and wellbeing will be picked up by a number of sources including Healthy Schools, Teenage Pregnancy and the Drug, Alcohol Action Team.
- Great Hollands Survey where 118 young people between the ages of 11 – 19 took part in a targeted consultation to explore their views of a financial investment in youth facilities in Great Hollands.
- Through the Extended Services and Children's Centre programme children, young people and their families have been asked about what services/support they would like to see being developed and many of the Extended Services activities have been developed as a direct response to this, including sports, art and drama activities.

- Children who are looked after have the opportunity to contribute their views to their statutory reviews, and also have the opportunity to participate in the “Children in Care Council”, where they have developed and produce a regular magazine called “Say it loud Say it proud”. A participation worker also supports young people who are looked after, running a regular group to support them in positive activities and expressing their views.
- The Youth Forum meets on a regular basis, supported by a Youth Worker, and have an opportunity to express their views with a range of issues and initiatives. Young people from the Youth Forum examined the priorities in the Children and Young People's Plan and fed back comments, stating that they agreed with the priorities and felt they were the right ones, they enjoyed the opportunity to discuss the priorities and were able to have good discussion about what lay behind some priorities, for example looking at what supports emotional health and wellbeing. A comment was made that they would like to understand and be clear as to why some priorities were chosen, and this will form work for the future to ensure clear explanations are made.
- There are examples of where young people's views have been sought in the development of various plans and strategies, examples include the Children in Care Council's involvement in developing “The Pledge”, Young Carers involvement in the ongoing development of the Young Carers Strategy, including making a DVD, and the involvement of disabled children and young people in developing the Aiming High Strategy.
- Young people from the Youth Forum also attend the Children and Young People's Trust meetings and contribute to discussions, debates and decisions. On many occasions they have presented information to the CYP Trust on issues such as bullying, the use of the Youth Opportunity Fund, and more recently following an event for young people on participation using “Hear by Right” they presented the outcomes of the event and a recommendation was made and agreed that “Hear by Right” would be the strategic approach to be used for engagement and participation.

#### **14 –19 Partnership**

The 14 – 19 Partnership has specific aims which include; developing a strategy for planning and funding local provision, identifying the needs of learners and developing a varied curriculum, and ensuring submissions are made for inclusion in regional and national initiatives.

Major changes are taking place in the way that education is being provided for young people aged 14 – 19 and work will continue through the partnership to ensure that they have the best opportunities available to succeed in education and ongoing career development. Some of the forthcoming tasks include; reviewing the provision for young people not in employment or education [NEET], developing Diploma implementation plans, and reviewing the 14 – 19 plan in light of the 16 – 19 funding transfer due to take place in 2010.

Key achievements in the last year:

- The 14-19 Education Plan has been approved and adopted by the partnership and the Council (July 2008)
- Submission to Diploma Gateway 3 made (November 2008), and approval has been granted to introduce four Diploma lines of learning in 2010 (April 2009). This was positively reviewed by an assessor in June 2009.
- 14-19 Consortium Coordinator appointed (March 2009) leading to planning for Information, Advice and Guidance development and communication and marketing strategy
- Significant amount of work undertaken as part of the 16-19 Funding Transfer process from the Learning and Skills Council to the local authority in 2010.

### **Pathways to Success Group**

The Pathways to Success Group has a role in promoting the economic wellbeing of young people and coordinates activity to increase levels of engagement by young people in education and training, and preparing for employment and leaving school.

The group has a focus on many of the wider issues that impact on the economic wellbeing of young people. Work will continue through this group to address the wider needs of young people, including the monitoring of teenage pregnancy and housing issues. The group will focus on developing models for Integrated Youth Support across Bracknell Forest.

Key achievements in the last year include:

- Continuing to monitor issues facing young people 13-19 across all services- universal and targeted services including
  - young people and benefits on going with Job Centre Plus
  - use of Rapid English programme across YOS, Connexions & NRG
  - identification of key priorities for work in schools
  - monitoring of provision available to young people especially Education 2 Employment [E2E] and level 1.
- Monitoring and responding to the impact of the economic downturn on the employment of young people. Engaging wider partners such as the Bracknell Forest Partnership and the Children and Young People's Trust in considering the issues and actions to reduce the impact.

### **Local Safeguarding Children Board [LSCB]**

The Local Safeguarding Children's Board is a statutory board that has responsibility for

ensuring that safeguarding is inherent in all our work with children, young people and families, and that safeguarding is seen as “Everybody’s Business”.

The work programme for the LSCB has been intensive with examples including; a safeguarding toolkit being developed and launched in February 2009, a Section 11 Audit of safeguarding practice, ongoing joint working with colleagues across Berkshire, an LSCB Conference aimed at training and raising awareness, developing and implementing a safeguarding training programme.

Following the report on the Baby Peter tragedy in Haringey the local authority, police and health services have reviewed their child safeguarding arrangements with regard to staffing, child protection practice, workforce development, policy and procedure, management and governance. These action plans have been reviewed and approved by the LSCB Executive. There is now further work to do in response to the Laming Report and the government action plan.

Further work for the LSCB will be required when the new version of “Working Together” is published later this year.

The LSCB will be required to publish an annual report on the effectiveness of safeguarding arrangements locally, and will be more closely aligned to the work of the Children and Young People’s Trust

**Examples of achievements include:**

Safeguarding Toolkit was launched in February 2009 with 200 organisations attending. The Toolkit identifies every organisation’s responsibilities for safeguarding children/young people, providing tools and exemplar policy and guidance to support organisations to meet their child safeguarding responsibilities.

Working through the Safeguarding Toolkit enables all organisations to complete a full Section 11 self-assessment as part of the Berkshire wide Section 11 Audit.

Self assessments of all LSCB statutory partner agencies now completed for Phase One of the Section 11 Audit, and action plans have been developed across Berkshire. The responsibility for undertaking this work was shared between the six Berkshire LSCBs. Schools are self assessing between March and May 2009 (Phase Two) and the results of those self assessments are being analysed during June and July 2009. The remaining organisations providing services to children will self assess at the end of 2009 (Phase Three). These include early years providers and voluntary and community organisations providing leisure and out of school hours activities for children and young people.

There is now a regular LSCB newsletter which has provided further information on the Safeguarding Toolkit and the Section 11 Audit, and has included articles on E-safety, anti-bullying and child employment.

Safeguarding Cue Cards published and distributed to professionals and adults in contact with children and young people, and also to children and young people themselves, to

provide guidance on how to seek help and support when a safeguarding issue arises.

The Raising Awareness Sub Group has led the development of the 2009 LSCB Annual Conference which was held on 4 June 2009.

Together with the other eight LSCBs in the Thames Valley Region, the Bracknell Forest LSCB has supported the development and approval of a Thames Valley wide protocol for missing children between local authority Children's Services and the Thames Valley Police.

A revised substance misuse protocol to guide multi-agency action in safeguarding children and young people from impact of substance abuse by their parents, carers and other household members has been published on the LSCB website.

The Bracknell Forest LSCB has continued to lead work across Berkshire in collaboration with the LSCBs in all six of the unitary authorities to implement the agreed common dataset for all the key safeguarding agencies, which is being used from 2008/09 to record safeguarding performance across those different services against a range of benchmarking data. It is expected that the first full data reports will be available in September 2009.

### Annex 3

#### NEEDS ANALYSIS 2008/09 EXECUTIVE SUMMARY

This needs analysis supports the ongoing work of the Bracknell Forest Children and Young People's Trust, bringing together data and information to inform the business of the Children and Young People's Trust, including the Joint Commissioning Framework and the Children and Young People's Plan.

Information in this document and the accompanying data supplement, provide an overview of Bracknell Forest including a break down of a range of data to ward level, enabling a more detailed picture to emerge in relation to the needs across the borough and how these can differ when looking at individual geographical areas.

Bracknell Forest is considered to be a prosperous and healthy area in which to live. This overall image masks the fact that in some parts of Bracknell there are difficulties and challenges for some of our residents that result in a higher level of need, and consequently a higher level of support requirements.

The needs analysis is presented under a range of headings, initially looking at some overview information including population, ethnicity and deprivation. It then looks at data under the headings of the five Every Child Matters Outcomes.

The **overview** information largely reflects a positive picture of Bracknell Forest, but information to note includes:

- The growth rate of the population, and its relatively young age compared to national averages.
- The growth in numbers of young people aged 15- 19
- A small number of wards have above the average number of 0 – 19 year olds in residence. Whilst this is not extreme, it may impact on the services supporting children, young people and families in those areas.
- There has been a steady growth rate in the BME [Black and Minority Ethnic] groups; school Census was 13.9% in January 2008.
- The number of languages spoken in schools high at 70, but the distribution of children and young people speaking these languages is wide.
- The overall rank of deprivation masks significant pockets of deprivation at ward level.

The overall **health** of Bracknell Forest is good; with many positive indicators for children and young people and their families. Information to note includes:

- Childhood obesity is an issue with the data for Year 6 children above the South East average.
- Physical activity rates in Bracknell Forest Children are below the England average
- Ward level data shows significant differences in health outcomes when comparing the most deprived wards and the least deprived wards.
- Rates of teenage pregnancy have improved although this remains a concern in some wards.

**Stay Safe** covers a broad range of information, including road safety, child protection and children looked after, crime, youth crime and anti-social behaviour, and bullying. Information to note includes:

- The numbers of children who become subject of a Child Protection Plan, or who become looked after varies over the period of a year, mapping the originating addresses of these children shows that the areas from which they originate, are also those areas where there is greater disadvantage and or issues of deprivation.
- Data on child protection at end 2008 shows that there were more boys than girls with a Child Protection Plan, which varies to the national trend which is more equal.
- Bullying is still a concern for young people, as is the fear of crime in and around local areas
- Incidents of domestic abuse have risen, and needs to be monitored to ascertain whether there is a genuine increase in incidents, or whether the rise is due to recording practices.

**Enjoy and Achieve** shows progress made by children and young people through their educational journey. Enjoyment is difficult to measure but some comments made by children and young people in the "Tell Us" Survey provide an insight into their views. Information to note includes:

- The Early Years Foundation Stage has been successful in narrowing the gap between the lowest achieving 20% in the Early Years Foundation Stage Profile and the rest.
- At age 11 the key indicator of Level 4+ in English and mathematics has improved and is above both the national and regional averages.
- GCSE results show improvement.
- Ward level data shows a number of wards where the gender difference in GCSE results is more marked.
- Bracknell Forest has a higher rate of permanent exclusions in Secondary Schools than statistical neighbours, and the England average.
- A high % of children and young people said they enjoyed school, but a number of them said they would like more help from family and friends.

**Make a Positive Contribution** shows the way in which children and young people are provided with support to enable them to contribute effectively to their communities. This is a difficult outcome to measure, and much of the evidence is based on what children and young people actually tell us. Information to note includes:

- The numbers of young people entering the youth justice system for the first time has been consistently lower than [YJB] statistical neighbours.
- Young people are supported in many ways to make a positive contribution, a high % in the "Tell Us" Survey have said they give their views to a school council, and give their time to help a charity.
- Overall performance in the survey showed that 85% of pupils in Bracknell participated in positive activities, which is much higher than the 69.5% national average.



**Economic Wellbeing** shows the way in which children and young people are supported to overcome socio-economic disadvantage to achieve their full potential. This is an area of particular concern in the current national economic downturn which is being closely monitored for its impact. Information to note includes:

- Bracknell Forest has the highest % of workers in management, professional, secretarial and skilled trade occupations against the South East and Great Britain average.
- The % of working aged people qualified to level 2 has increased in 2006/07, and the % of working aged people qualified to level 4 has increased in 2006/07.
- The IMD for deprivation showing the average rank of income and shows a significant difference between the most deprived ward and the least deprived ward.
- Evidence from Connexions data collection shows that the economic downturn is having a significant impact on the employment opportunities for young people, with the trend in young people Not in Employment, Education or Training [NEET] has risen compared to previous years.

The needs analysis overall shows a positive picture of Bracknell Forest as a thriving, prosperous community, and this is largely an accurate picture. In ensuring that our children, young people and families have the best possible opportunities there is a need to look below this positive picture and address the issues that impact on life chances.

The information presented in this needs analysis and the data supplement largely support the current priorities in the Children and Young People's Plan however there are a number of **recommendations** as a result of this analysis for consideration by the Children and Young People's Trust.

1. Continue to monitor the trends and outcomes in relation to children and young people's ethnicity, this includes improved use of data and information to inform planning, and address particular areas of need, [for example English as an Additional Language]
2. Work is undertaken to reduce the rising numbers of children who are obese.
3. Address the inequalities in health outcomes across the borough
4. Continue to address the concerns of young people about crime and bullying.
5. Continue to ensure that safeguarding children and young people remains a priority in the work of all agencies.
6. Continue to raise the attainment of pupils at all stages of their school career
7. Narrow the gap in educational achievement between children from low income and disadvantaged backgrounds and their peers.
8. Address the gap in attainment related to gender
9. Continue to seek ways to support children and young people to make a positive contribution.
10. Support children, young people and families through the impact of the economic downturn.

**List showing the linked plans and strategies to support delivery of Priorities in CYPP  
[note list is not exhaustive and may be updated periodically to reflect current planning]**

- CAMHS Strategy – We all Have a Part to Play
- Play Strategy
- Care Matters
- Young Carers Strategy [currently in draft]
- Integrated Youth Support
- Local Safeguarding Board Business Plan
- Aiming High for Disabled Children
- Connexions Business Plan
- Youth Services Plan
- Social Care and Learning Service Plan
- Children’s Centre Action Plan
- Young People’s Substance Misuse Plan
- Anti-Bullying Strategy – Safer Together Safer Wherever
- Youth Justice Self Assessment and Improvement Plan
- Parenting Strategy – Strong Foundations
- Primary Strategy
- Secondary Strategy
- Special Education Policy
- 14 – 19 Education Plan
- Community and Activities Services Group Action Plan [Currently in draft]

**Additional Information - Web links**

<p><b>Annual Performance Assessment</b>  <a href="http://www.bracknell-forest.gov.uk/living/liv-change-for-children/liv-changes-in-the-council/liv-annual-performance-assessment.htm">http://www.bracknell-forest.gov.uk/living/liv-change-for-children/liv-changes-in-the-council/liv-annual-performance-assessment.htm</a></p>
<p><b>Corporate Area Assessment</b>  <a href="http://www.audit-commission.gov.uk/localgov/audit/CAA/Pages/CAAframework.aspx">http://www.audit-commission.gov.uk/localgov/audit/CAA/Pages/CAAframework.aspx</a></p>
<p><b>Common Assessment Framework</b>  <a href="http://www.bracknell-forest.gov.uk/living/liv-change-for-children/learn-common-assessment-framework.htm">http://www.bracknell-forest.gov.uk/living/liv-change-for-children/learn-common-assessment-framework.htm</a></p>
<p><b>Children's Trust Information</b>  <a href="http://www.bracknell-forest.gov.uk/living/liv-change-for-children.htm">http://www.bracknell-forest.gov.uk/living/liv-change-for-children.htm</a></p>
<p><b>Parenting Strategy and Parenting Information</b>  <a href="http://www.bracknell-forest.gov.uk/living/liv-children-and-families/liv-parenting-support.htm">http://www.bracknell-forest.gov.uk/living/liv-children-and-families/liv-parenting-support.htm</a></p>
<p><b>Extended Services</b>  <a href="http://www.bracknell-forest.gov.uk/learning/learn-extended-schools.htm">http://www.bracknell-forest.gov.uk/learning/learn-extended-schools.htm</a></p>
<p><b>Children's Centres</b>  <a href="http://www.bracknell-forest.gov.uk/learning/learn-extended-schools/learn-childrens-centres.htm">http://www.bracknell-forest.gov.uk/learning/learn-extended-schools/learn-childrens-centres.htm</a></p>
<p><b>Adult Learning and Family support</b>  <a href="http://www.bracknell-forest.gov.uk/learning/learn-adult-learning.htm">http://www.bracknell-forest.gov.uk/learning/learn-adult-learning.htm</a></p>
<p><b>Local Safeguarding Children Board</b>  <a href="http://www.bracknell-forest.gov.uk/living/liv-children-and-families/liv-local-safeguarding-children-board.htm">http://www.bracknell-forest.gov.uk/living/liv-children-and-families/liv-local-safeguarding-children-board.htm</a></p>
<p><b>Aiming High for Disabled Children</b>  <a href="http://www.bracknell-forest.gov.uk/living/liv-children-and-families/liv-services-disabled-children/liv-aiming-high-for-disabled-children.htm">http://www.bracknell-forest.gov.uk/living/liv-children-and-families/liv-services-disabled-children/liv-aiming-high-for-disabled-children.htm</a></p>
<p><b>Integrated Youth Support</b>  <a href="http://www.bracknell-forest.gov.uk/plans-for-integrated-youth-support-services.pdf">http://www.bracknell-forest.gov.uk/plans-for-integrated-youth-support-services.pdf</a></p>
<p><b>Contact Point</b>  <a href="http://www.bracknell-forest.gov.uk/living/liv-change-for-children/liv-contactpoint.htm">http://www.bracknell-forest.gov.uk/living/liv-change-for-children/liv-contactpoint.htm</a></p>
<p><b>14 – 19 Education Plan</b>  <a href="http://www.bracknell-forest.gov.uk/14-19-education-plan-2008-to-2013.pdf">http://www.bracknell-forest.gov.uk/14-19-education-plan-2008-to-2013.pdf</a></p>

<b>Sustainable Community Strategy</b> <a href="http://www.bracknell-forest.gov.uk/your-council/yc-bracknell-forest-partnership/yc-sustainable-community-strategy.htm">http://www.bracknell-forest.gov.uk/your-council/yc-bracknell-forest-partnership/yc-sustainable-community-strategy.htm</a>
<b>Local Area Agreement</b> <a href="http://www.bracknell-forest.gov.uk/your-council/yc-bracknell-forest-partnership/yc-local-area-agreement.htm">http://www.bracknell-forest.gov.uk/your-council/yc-bracknell-forest-partnership/yc-local-area-agreement.htm</a>
<b>Children's Mental Health</b> <a href="http://www.bracknell-forest.gov.uk/living/liv-children-and-families/liv-children-mental-health.htm">http://www.bracknell-forest.gov.uk/living/liv-children-and-families/liv-children-mental-health.htm</a>
<b>Crime and Disorder Reduction Partnership</b> <a href="http://www.bracknell-forest.gov.uk/living/liv-safer-communities/liv-crime-and-disorder-reduction-partnership.htm">http://www.bracknell-forest.gov.uk/living/liv-safer-communities/liv-crime-and-disorder-reduction-partnership.htm</a>
<b>Bracknell Forest Partnership</b> <a href="http://www.bracknell-forest.gov.uk/yc-bracknell-forest-partnership.htm">http://www.bracknell-forest.gov.uk/yc-bracknell-forest-partnership.htm</a>
<b>Children's Workforce Development Council</b> <a href="http://www.cwdcouncil.org.uk/">http://www.cwdcouncil.org.uk/</a>

## FEEDBACK/COMMENTS

We would like to provide you with the opportunity to tell us what you think about the plan. We will be undertaking work to produce a new plan on 1 April 2011.

If you have comments/views about what you think should be in the new plan please tell us.

<b>Send us comments by email to:</b>	<a href="mailto:childrenfirst@bracknell-forest.gov.uk">childrenfirst@bracknell-forest.gov.uk</a>
<b>Comments in Writing can be posted to:</b>	Sandra Davies Children's Trust Business Manager Seymour House 38 Broadway Bracknell RG12 1AU

If you have any comments or queries about this plan please contact [childrenfirst@bracknell-forest.gov.uk](mailto:childrenfirst@bracknell-forest.gov.uk)

Summaries or extracts of this document can be made available in large print, in Braille or on audio cassette. Copies in other languages may also be obtained. Please contact Sandra Davies on 01344 352148 or minicom 01344 352405.



This document was produced by Bracknell Forest's Children and Young People's Trust

Designed and printed by Bracknell Forest Borough Council's in-house **Design & Print Services**